

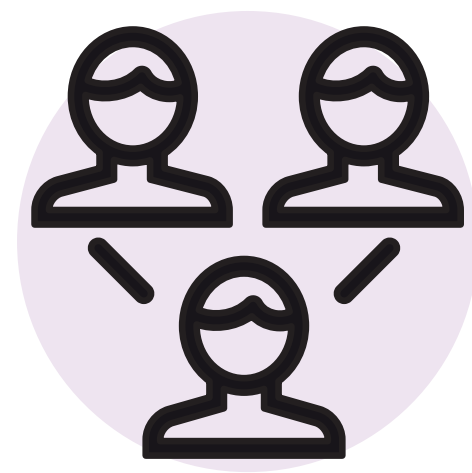
• skillstep programme

A Social Return on Investment Analysis

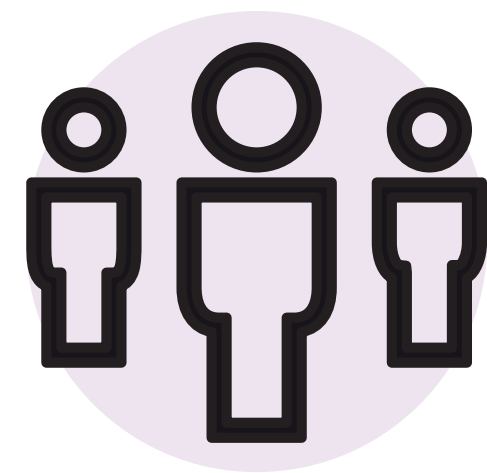
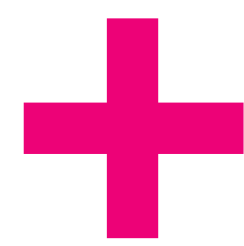
Authors: Henshaws – Helen Doyle, Research and Information Manager and Julie Parrish, Skillstep Co-ordinator; Manchester Business School – Alex Daly, Ajay Kaushik, Sarah Li, Irada Valiyeva and Carlos Lopez.

Skillstep is a 12 week course for people with sight loss who want to work, volunteer or continue studying – working to achieve a society in which people with sight loss can fully participate.

OVERVIEW



Collaborative working is fundamental to the delivery of the course. We work with key partners like Trafford College...



...and local employers to develop opportunities for work placements and volunteering.



In total we work with **over 40** partner organisations.

Working in partnership with Manchester Business School to conduct a Social Return on Investment (SROI) analysis of the Skillstep course to measure how the course adds social value.



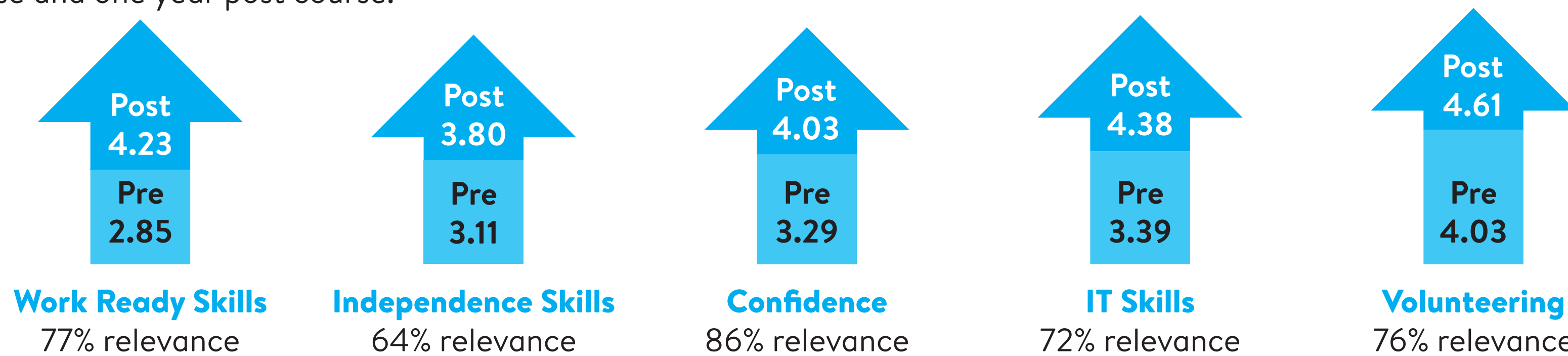
The University of Manchester
Manchester Business School

This is defined as economic, environmental and social benefits – a ratio to demonstrate the return in social value to the wider community for every £1 spent on Skillstep.

RESULTS

The SROI analysis showed the project creates value by improving key skills and outcomes. All outcomes are measured on a scale of 1-5 pre course, post course and one year post course.

The following scores are averages:



The course creates value in two main ways – work-ready skills for students and rebuilding confidence and independence.

“Skillstep has opened my world.”

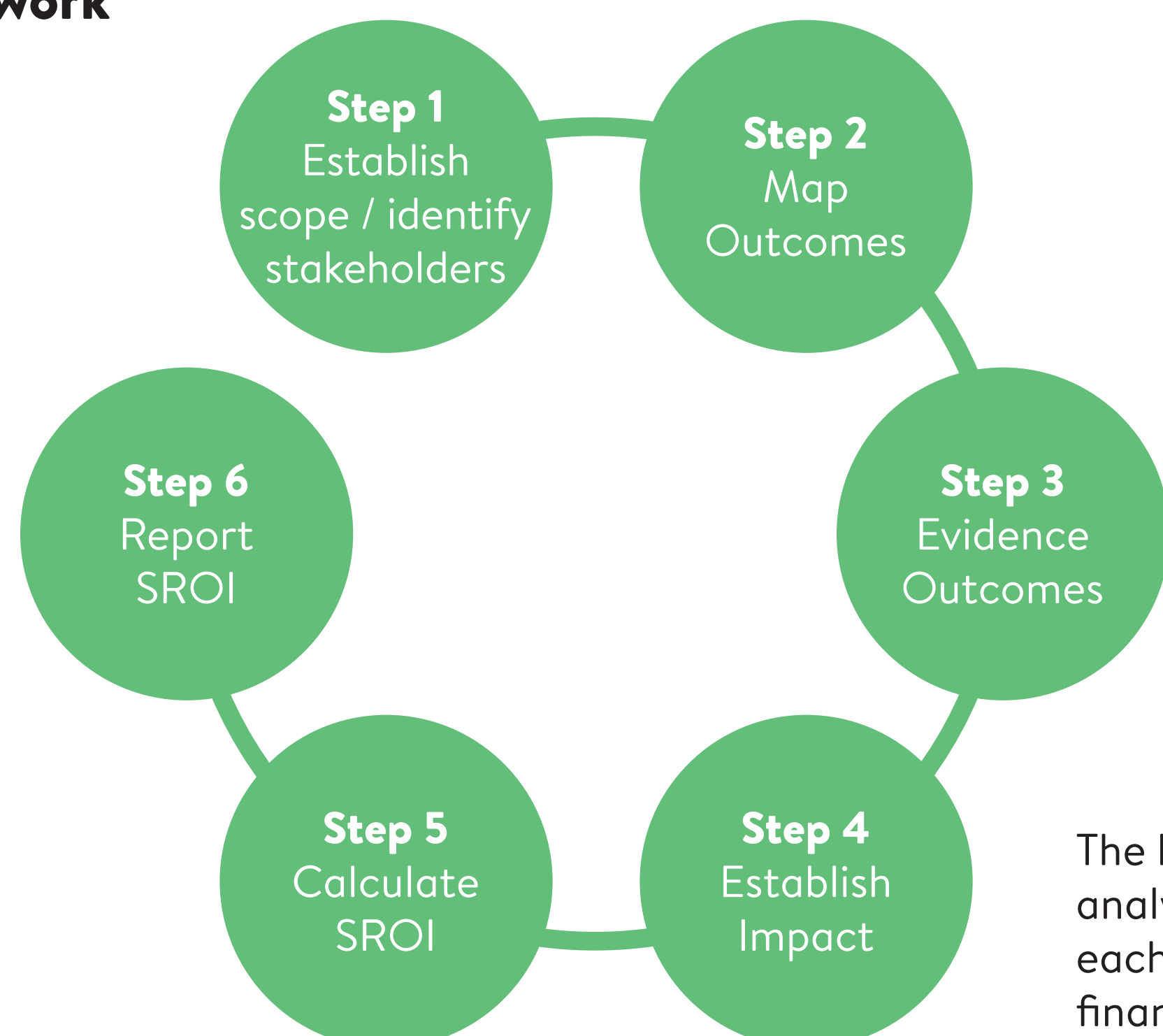
John, Manchester

EVERY **£1** SPENT = **£1.63** IN SOCIAL VALUE

METHODS

The SROI framework was adopted in the study to calculate the social value created by the Skillstep programme.

SROI Framework



The key to the SROI analysis is to assign each outcome area a financial proxy so that accrued social value can be calculated.

Source: Adapted from the SROI Framework

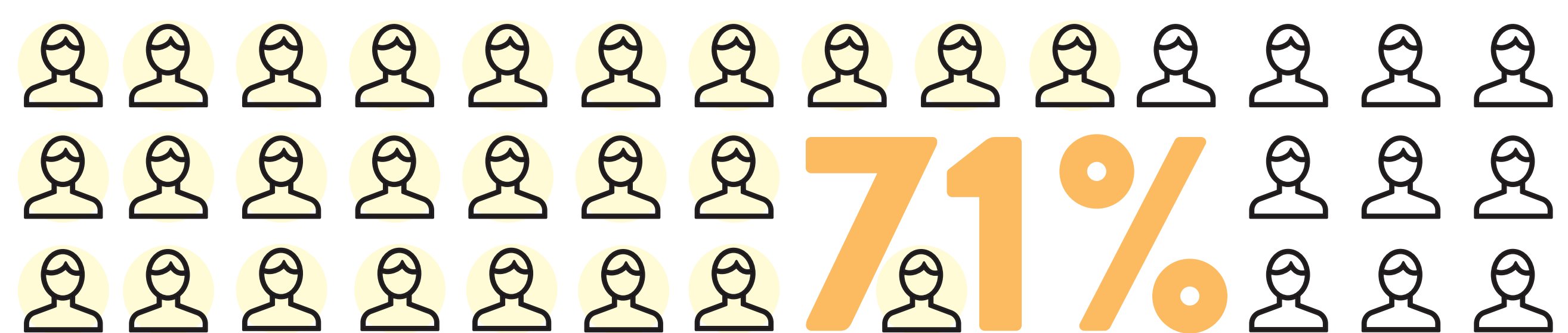
CONCLUSIONS

The study shows that to create a society where people with sight loss can fully participate requires a focus on two main areas:

To enable people with sight loss to develop and re-learn the skills they need to fully participate.

To work collaboratively with key organisations across the community to break down barriers to enable participation.

The SROI analysis demonstrates that Skillstep enables people with sight loss to participate through the development of their work and mobility skills and increasing their confidence and independence.



71% of Skillstep students are either volunteering, in further study or in paid employment

This collaborative delivery model is something which can be replicated across the sector as a model of good practice to enable a society in which people with sight loss can fully participate.



Henshaws is a charity that helps people living with sight loss and a range of other disabilities to achieve their ambitions and go beyond expectations



community services
beyond expectations

Henshaws Society for Blind People, Charity Number 221888, acting by its trustee, Henshaws Society for Blind People Trustee Limited.



Designed by JG Creative. Charity communication specialists www.jg-creative.co.uk